

Rexnord® TableTop® and MatTop® Chains



Rexnord® 6990 Series MatTop® Chain

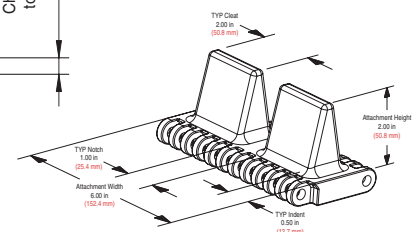
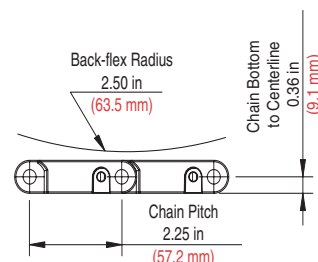
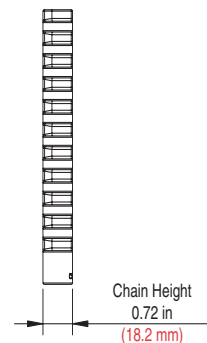
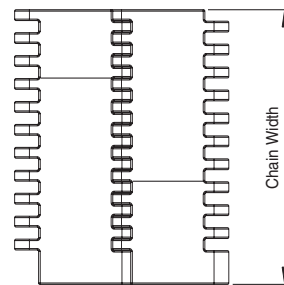
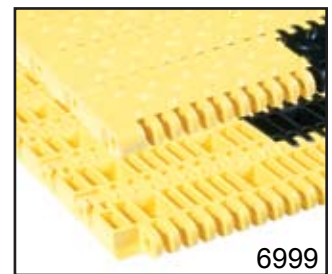
Rexnord® 6990 Series MatTop® Chain for Car Care

Heavy-duty 2.25 in (57.2 mm) pitch plastic modular 6995 Solid Top and 6999 Safety Top MatTop® Chains for exterior car washing and interior detailing; provide smooth, safe, and simple conveying of vehicles and people without the maintenance, bumping, jerking, and safety concerns of traditional steel chain. **Smooth Operation** - with Rexnord's 6995 MatTop Chain and its unique chain - sprocket interaction, vehicles ride smoothly on the gently moving flat conveying surface. Requiring no guiderails or correlators, the 30 in or 42 in wide dual lane chains can virtually convey any size or style vehicle with no damage to wheels, rims, or finish. Rugged, molded T1 and T2 vehicle pushers pull cars onto, push cars through,

and push cars off the conveyor while in neutral, so loading and unloading are quick and easy. **Improved Safety** - the wide, slip-resistant Rexnord 6999 Safety Top MatTop Chain for interior detailing safely moves vehicles and people in unison, so detailing is safer, easier, and more efficient. The non-slip tread pattern and wide, smooth conveying surface reduces walking and eliminates the hazards of guiderails, pinch points, and rollers. **Simple** - installing Rexnord 6990 Series MatTop Chains significantly reduces maintenance and operating costs. Lubrication and take-ups are eliminated with Rexnord MatTop Chain. The Rexnord TwistLock® pin retention system and split sprockets make Rexnord's 6900 Series MatTop Chain virtually maintenance free.

Features & Benefits

- Solid link construction
- Very high strength and stiffness due to the unique hinge and pin design
- 5000 lbs/ft (70,000N/m) working load
- Superior sprocket and chain interaction ensuring smooth operations and long chain life
- Quick installation and easy maintenance
- High strength sprockets available in multiple bore sizes and styles
- Split sprockets that can be assembled and disassembled without shaft removal
- Robust 2.25 in (18 mm) thick links enabling the chain to convey large and heavy loads
- Completely closed surface (Solid Top and Safety Top) eliminating small parts from getting stuck in the chain and improving employee safety
- The Safety Top surface provides additional grip on the chain surface in wet or humid environments
- Rexnord TwistLock® pin retention systems provide easy installation and maintenance features
- Chain is available with T1 and T2 vehicle pushers for loading, conveying, and unloading product
- Available in wear resistant acetal, ultraviolet resistant, low temperature, high temperature and multi-colored materials



Rexnord, TableTop, MatTop, and TwistLock are registered trademarks of Rexnord Industries, LLC. All rights reserved.

WORLDWIDE CUSTOMER SERVICE

AUSTRALIA

Rexnord Australia Pty Ltd
Picton, New South Wales
Phone: 61-2-4677-3811
Fax: 61-2-4677-3812

BRAZIL

Rexnord Correntes Ltda.
Sao Leopoldo - RS
Phone: 55-51-3579-8022
Fax: 55-51-3579-8029

CANADA

Rexnord Canada Ltd.
Scarborough, Ontario
Phone: 1-416-297-6868
Fax: 1-416-297-6873

CHINA

Rexnord Conveyor Products
(Wuxi) Co. Ltd.
Shanghai
Phone: 86-21-62701942
Fax: 86-21-627019433

FLATTOP EUROPE

Rexnord FlatTop Europe b.v.
's-Gravenzande, The Netherlands
Phone: 31-174-445-111
Fax: 31-174-445-222

After Hours/Emergency Phone:
31-174-445-112

Rexnord Marbett®, S.r.l.
Correggio (RE), Italy
Phone: 39-0522-639333
Fax: 39-0522-637778

RMCC Deutschland Kette GmbH
Aßlar-Werdorf, Germany
Phone: 49-6443-83140
Fax: 49-6443-831420

Rexnord FlatTop France
Orly Cedex
Phone: 33-1-4173-4220
Fax: 33-1-4173-4229

MEXICO

Rexnord FlatTop
Toll-Free Phone: 001-888-808-7787
Fax: 1-262-376-4720

UNITED STATES

Customer Service
Phone: 1-866-REXNORD
(1-866-739-6673)
Fax: 1-614-675-1898
E-mail: rexnordcs(state)@rexnord.com
Example: rexnordcs(ohio)@rexnord.com

Rexnord FlatTop North America
Grafton, Wisconsin
Phone: 1-262-376-4700
Fax: 1-262-376-4720

Rexnord International - Power Transmission
Milwaukee, Wisconsin
Phone: 1-414-643-2366
Fax: 1-414-643-3222
international2@rexnord.com

ALL COUNTRIES NOT LISTED

Rexnord FlatTop Europe b.v.
's-Gravenzande, The Netherlands
Phone: 31-174-445-111
Fax: 31-174-445-222

After Hours/Emergency Phone:
31-174-445-112